

She's happy to be unhappy

BY GEORGE DICKIE
Zap2it

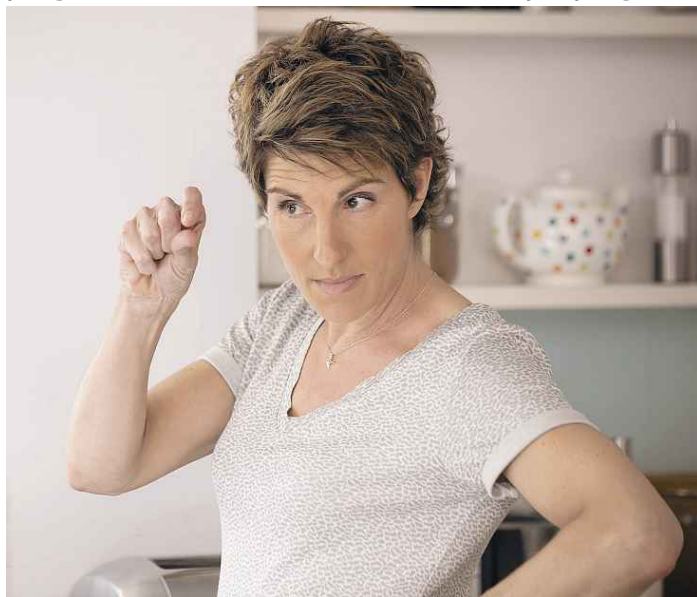
Tamsin Greig doesn't want to get into too much detail about the fifth and final season of Showtime's "Episodes" lest she give away spoilers. But she promises that the ending will be satisfying for viewers and a happy one for her character of TV writer-producer Beverly.

Or at least as happy as she's able to be.

"You know, David Crane and Jeffrey Klarik, who are the writers, describe the two characters of Sean and Beverly: Sean looks at life and thinks that the glass is half-full; Beverly looks at life and thinks the glass is an idiot," the British actress explains. "So whatever happens, she's always going to see the gloomy side of life, and everything that happens to them is a self-fulfilling prophecy of doom. And until right at the very end, when suddenly everything comes right, Beverly particularly experiences the closest that she ever gets to joy.

"I mean, I don't know that she likes it," Greig continues with a laugh. "I don't think she knows what to do with it. She and happiness are not welcome bedfellows."

As season 5 of the show business spoof kicks off Sunday at 9:30 p.m., several months have passed, and producing partners/spouses Beverly and Sean (Stephen Mangan) are less than thrilled



SHOWTIME / SOPHIE MUTEVELIAN

Tamsin Greig gets laughs out of pessimism on "Episodes."

to find themselves working for Sean's loathsome ex-partner, Tim (Bruce Mackinnon), on their new series, "The Opposite of Us." They fear his utter lack of talent and humor could bring it to a premature demise.

Also miserable is Matt (Matt LeBlanc), who fears his years as an actor will be forgotten, now that the game show he's hosting has blossomed into a major hit.

Since the series' premiere, the former "Friends" and "Man With a Plan" actor has earned kudos for allowing himself to be the butt of the joke, playing what is essentially a self-absorbed version of himself and not the most likable of characters. Greig, whose character is

often at odds with LeBlanc's, admires his gameness.

"The thing about Matt is he's a surprisingly brilliant straight actor," she says, "and he's playing a kind of subverted, grotesque version of himself . . . until you then actually don't know who the real Matt LeBlanc is. And he's brilliant at that and he's a great sport.

"He pitches jokes more than any of us and potential storylines to the extent that sometimes Jeffrey and David have said, 'Yeah, that's great. We can't do that. That's too close to the bone and that's too disgusting and we're not going there.' But he's really a game bird. He's a big sport. He's up for anything."

TV ON DVD

Archie's on the dark side of 'Riverdale'

RIVERDALE The Archie comics take on deeper, darker tones in CW's film-noir first season, designed to mix/match eras and generations (ex-"90210" dude Luke Perry as Archie's dad, "Suite Life" kid Cole Sprouse as teen Jughead). Extras include featurettes exploring the concept's CW-zation and its murder milieu, music shorts, Comic-Con panel, more. (Season 2 starts Oct. 11.) List price: \$40 for 13 episodes, either DVD or Blu-ray, out today from Warner. **KINGDOM: SEASONS 1-2** Gritty martial arts family



THE CW / DIVAH PERA

KJ Apa, left, as Archie and Luke Perry as Fred on "Riverdale."

saga from DirecTV stars Nick Jonas, Jonathan Tucker, Frank Grillo, Kiele Sanchez, Matt Lauria, in 30 episodes on

nine discs; \$20 DVD, Shout. **GOSPEL ACCORDING TO AL GREEN** '70s soul balladeer gives up fame to preach in Robert Mugge's 1984 career portrait, seen on PBS; new-transfer extras include 90-minute audio interview, filmmaker interview, outtakes; \$20 DVD or Blu-ray, MVD.

Complete series calendar:
SEPT. 12 "Friday Night Lights" on Blu-ray
SEPT. 19 "Bates Motel"
SEPT. 26 "Sleepy Hollow"
OCT. 24 "Teen Wolf"

— DIANE WERTS

today's picks

THE MURDER OF LACI PETERSON (10:01 p.m., A&E) — **Premiere:** Documentary series explores the infamous 2002 crime. In the debut episode, Laci Peterson, eight months pregnant, goes missing in Modesto, California, prompting a massive search and an intense police focus on her husband, Scott.

BACHELOR IN PARADISE (8 p.m., ABC/7) — Season 3 alumni Carly and Evan tie the knot and the cast tries to regain momentum following a production lapse.

LEAH REMINI: SCIENTOLOGY AND THE AFTERMATH (9 p.m., A&E) — **Season premiere:** Two women raised inside the Church of Scientology's now-defunct Cadet Org share their stories; Remini helps the women take a step toward achieving justice.



AP

"The Murder of Laci Peterson" explores the 2002 killing of the expectant mother.

off the wall

AMITYVILLE INK Empire State Studio's Tommy Helm and Marvin Silva have just jumped into the mix on this season's "Ink Master" (10 p.m., Spike), vying for \$200,000 and the show's first-time title of Master Shop.

— DIANE WERTS



SPIKE TV

Tommy Helm and Marvin Silva from Empire State Studio in Amityville.

tv talk

DAYTIME KELLY & RYAN (9 a.m., WABC/7) — Jamie Foxx

RACHAEL RAY (10 a.m., WABC/7) — Valerie Bertinelli (repeat)

WENDY WILLIAMS (10 a.m., WNYW/5, 4 p.m., WWOR/9, 2 a.m., BET) — Dave Mizejewski (repeat)

HARRY CONNICK JR. (10 a.m., WWOR/9; 2 p.m., WNYW/5) — John Lithgow (repeat)

THE VIEW (11 a.m., ABC/7) — Ariel Winter (repeat)

THE REAL (11 a.m., WNYW/5, 5 p.m., WWOR/9) — Viewer advice (repeat)

THE TALK (2 p.m., WCBS/2) — Carl and Rob Reiner (repeat)

STEVE HARVEY (2 p.m., WNBC/4) — Moms discuss parenting teens (repeat)

DR. PHIL (3 p.m., WCBS/2; 8 p.m., WLNY/10/55) — Problem drinker (repeat)

ELLEN DEGENERES (3 p.m., WNBC/4) — Nicki Minaj (repeat)

NIGHT

CARSON (10 p.m., Antenna TV) — Dennis Hopper (Aug. 15, 1991)

CONAN (11 p.m., TBS) — Chris Gethard

COLBERT (11:35 p.m., CBS/2) — Daniel Craig

FALLON (11:35 p.m., NBC/4) — Keegan-Michael Key

MEYERS (12:35 a.m., NBC/4) — Adam Driver

CORDEN (12:35 a.m., CBS/2) — Lin-Manuel Miranda



Adam Driver visits Seth Meyers.